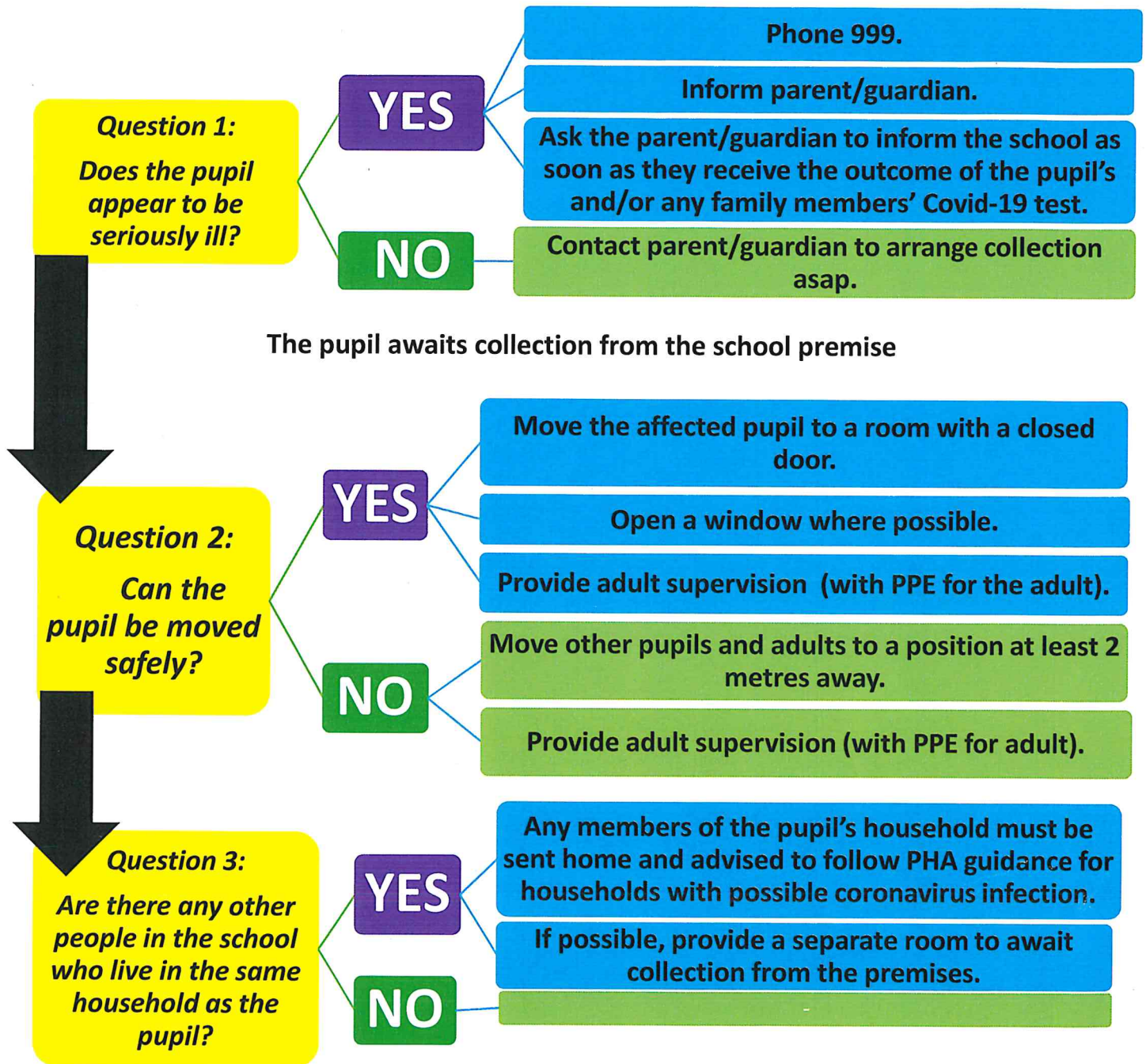
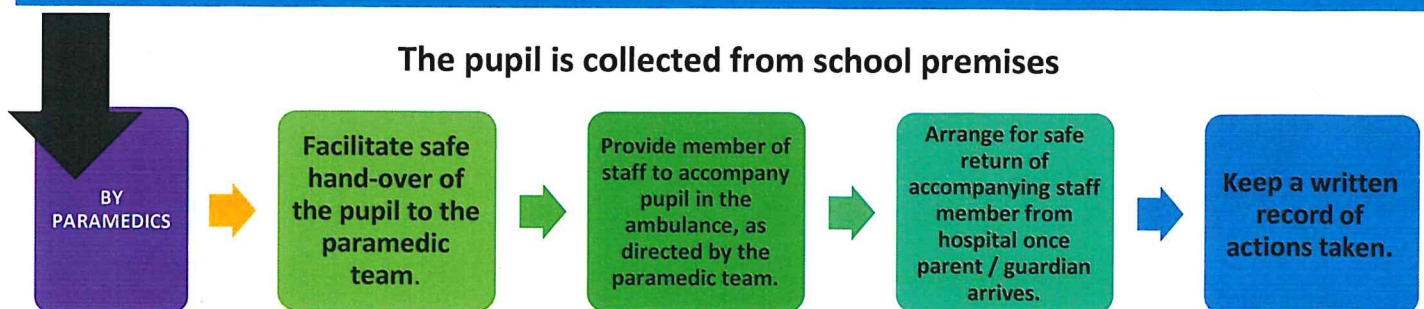


What happens if a pupil exhibits symptoms of Covid-19 whilst in school?

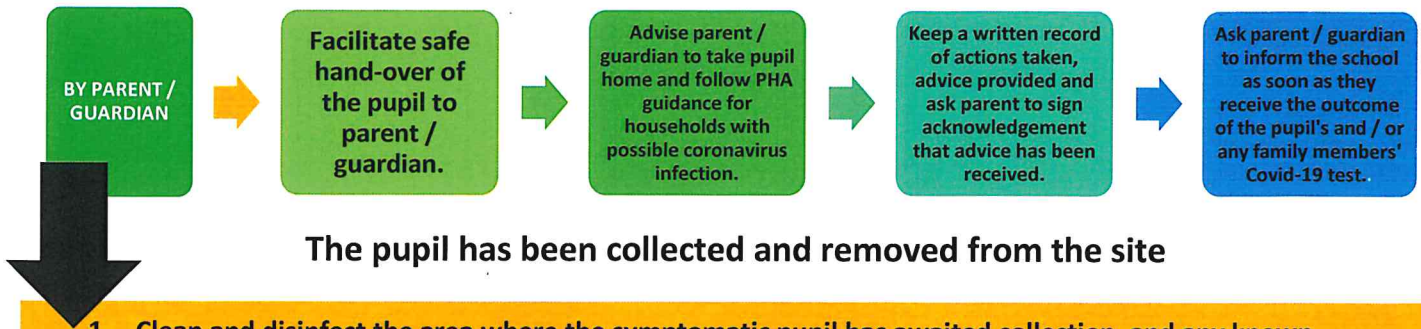
The pupil exhibits / reports symptoms to a member of staff



If pupil uses washroom / toilet – clean and disinfect the facility immediately afterwards. Do not allow anyone else to use the facility until it has been cleaned and disinfected.



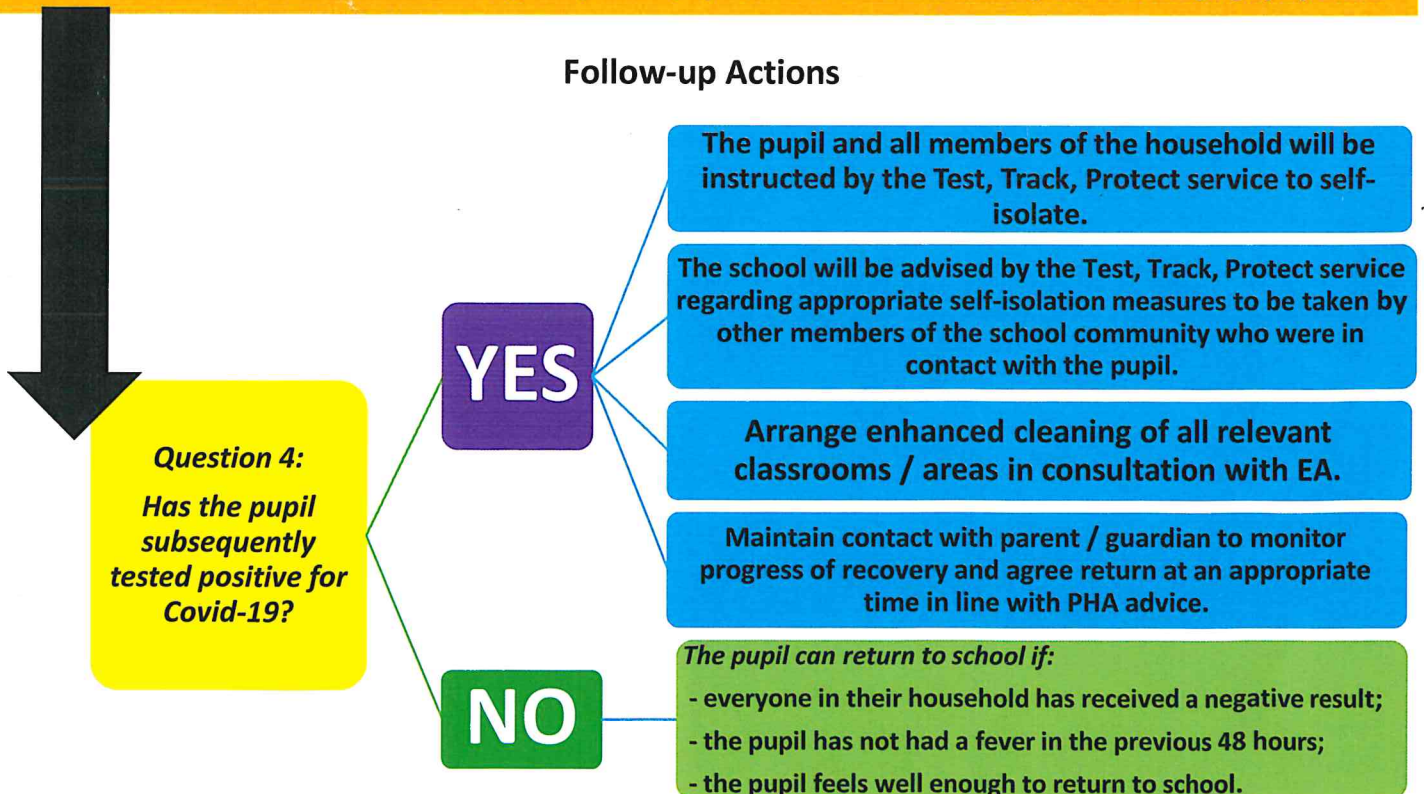
What happens if a pupil exhibits symptoms of Covid-19 whilst in school?



The pupil has been collected and removed from the site

1. Clean and disinfect the area where the symptomatic pupil has awaited collection, and any known workstations that the pupil has recently used.
2. Supervising adult washes hands thoroughly and safely disposes of PPE.
3. Complete written record of:
 - who made the decision to remove the pupil from school
 - who was contacted (parent / guardian) and by whom
 - who provided supervision whilst pupil was awaiting collection
 - who collected the child from the premises
4. If the pupil was collected from the school by paramedics and taken to hospital by ambulance, ensure that contact is made with the parent / guardian as soon as possible to inform them of what has happened, the need to follow medical advice for the entire household in relation to a possible diagnosis for Covid-19. Ensure a record is made of this advice and who gave it to the parent / guardian.
5. Advise all staff to monitor and regularly check pupils, themselves and colleagues for emerging symptoms.

Follow-up Actions



If anyone who has been in contact with the pupil starts to display symptoms, follow the steps outlined in this document starting with Question 1.

What happens if a pupil exhibits symptoms of Covid-19 whilst in school?



The pupil has been collected and removed from the site

1. Clean and disinfect the area where the symptomatic pupil has awaited collection, and any known workstations that the pupil has recently used.
2. Supervising adult washes hands thoroughly and safely disposes of PPE.
3. Complete written record of:
 - who made the decision to remove the pupil from school
 - who was contacted (parent / guardian) and by whom
 - who provided supervision whilst the pupil was awaiting collection
 - who collected the child from the premises
4. If the pupil was collected from the school by paramedics and taken to hospital by ambulance, ensure that contact is made with the parent / guardian as soon as possible, to inform them of what has happened and the need to follow medical advice for the entire household in relation to a possible diagnosis for Covid-19. Ensure a record is made of this advice and who gave it to the parent / guardian.
5. Advise all staff to monitor and regularly check pupils, themselves and colleagues for emerging symptoms.



Follow-up Actions

Question 4: Has the pupil subsequently tested positive for Covid-19?

NO	YES
<p>The pupil can return to school if:</p> <ul style="list-style-type: none"> - everyone in their household has received a negative result; - the pupil has not had a fever in the previous 48 hours; - the pupil feels well enough to return to school. 	<p>The pupil and all members of the household will be instructed by the Test, Track, Protect service to self-isolate.</p> <p>The school will be advised by the Test, Track, Protect service regarding appropriate self-isolation measures to be taken by other members of the school community who were in contact with the pupil.</p> <p>Arrange enhanced cleaning of all relevant classrooms / areas in consultation with EA.</p> <p>Maintain contact with parent / guardian to monitor progress of recovery and agree return at an appropriate time in line with PHA advice.</p>

If anyone who has been in contact with the pupil starts to display symptoms, follow the steps outlined in this document starting with Question 1.

What happens if a pupil exhibits symptoms of Covid-19 whilst in school?

The pupil exhibits / reports symptoms to a member of staff

Question 1: Does the pupil appear to be seriously ill?

NO	YES
Contact parent / guardian to arrange collection asap.	Phone 999. Inform parent / guardian. Ask the parent / guardian to inform the school as soon as they receive the outcome of the pupil's and / or any family members' Covid-19 test.

The pupil awaits collection from the school premises

Question 2: Can the pupil be moved safely?

NO	YES
Move other pupils and adults to a position at least 2 metres away. Provide adult supervision (with PPE for the adult).	Move the affected pupil to a room with a closed door. Open a window where possible. Provide adult supervision (with PPE for the adult).
<ul style="list-style-type: none"> - If pupil uses washroom / toilet – clean and disinfect the facility immediately afterwards. - Do not allow anyone else to use the facility until it has been cleaned and disinfected. 	

Question 3: Are there any other people in the school who live in the same household as the pupil?

NO	YES
	Any members of the pupil's household must be sent home and advised to follow PHA guidance for households with possible coronavirus infection. If possible, provide a separate room to await collection from the premises.

The pupil is collected from school premises

BY PARENT / GUARDIAN	BY PARAMEDICS
Facilitate safe hand-over of the pupil to parent / guardian. Advise parent / guardian to take pupil home and follow PHA guidance for households with possible coronavirus infection. Keep a written record of actions taken, advice provided and ask parent to sign acknowledgement that advice has been received. Ask the parent / guardian to inform the school as soon as they receive the outcome of the pupil's and / or any family members' Covid-19 test.	Facilitate safe hand-over of the pupil to the paramedic team. Provide member of staff to accompany pupil in the ambulance, as directed by the paramedic team. Arrange for safe return of accompanying staff member from hospital once parent / guardian arrives. Keep a written record of actions taken.