

Year 11  
Parents  
Information  
Evening 2025



Introduction and welcome:  
Principal: Mr Gallagher



Head of Year 11:

Mr Harkin



## GCSE

“At the end of the day, the most overwhelming key to a child's success is the positive involvement of parents.”  
- Jane D. Hull

- *Parental support is 8 times more important in determining a child's academic success than social class.*
- *The Campaign for Learning found that parental involvement in a child's education can mean the difference between a top grade and a child who fails to achieve.*

# Supporting Loreto Standards



- Behaviour and manners
- Uniform
- Mobile phones
- Vaping

Thank you for your continued support



Senior skirt worn below the knee, pleats lie flat







## A place for everything.....



- Organisation isn't about perfection – it is about efficiency, reducing stress and clutter....



**GET  
ORGANISED**

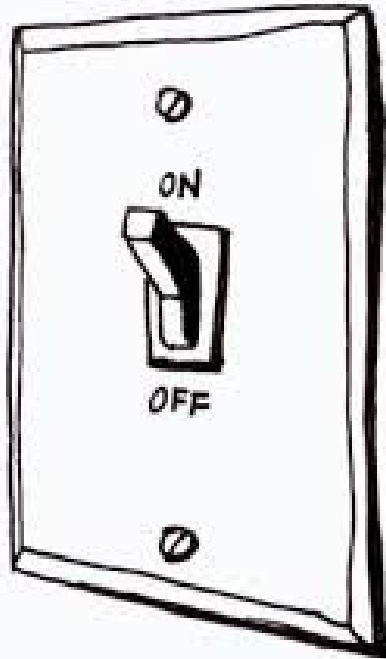


# What is expected.....



- Quiet, designated work area
- 2 – 2 ½ HOURS of work **EVERY NIGHT**
- Start early
- 20-30 minutes with short breaks
- Good routines
- **HARD WORK PAYS OFF**

## How can you help....



- Agree a balance between work and social life
- Keep encouraging them
- Positive influences such as other family members
- Incentives
- Avoid a battleground





# Online



- Google classroom.
- Research.
- Presentations.



- Be vigilant!
- Check that they are using online time effectively & efficiently.

## Coping with GCSE pressure



- Start work in good time
- Talking about their feelings
- School Counsellor
- Sport
- Time with friends
- Keeping things in perspective

**Take5**  
steps to wellbeing

**HSC** Health and  
Social Care



[www.mindingyourhead.info](http://www.mindingyourhead.info)



Take 5 page 6

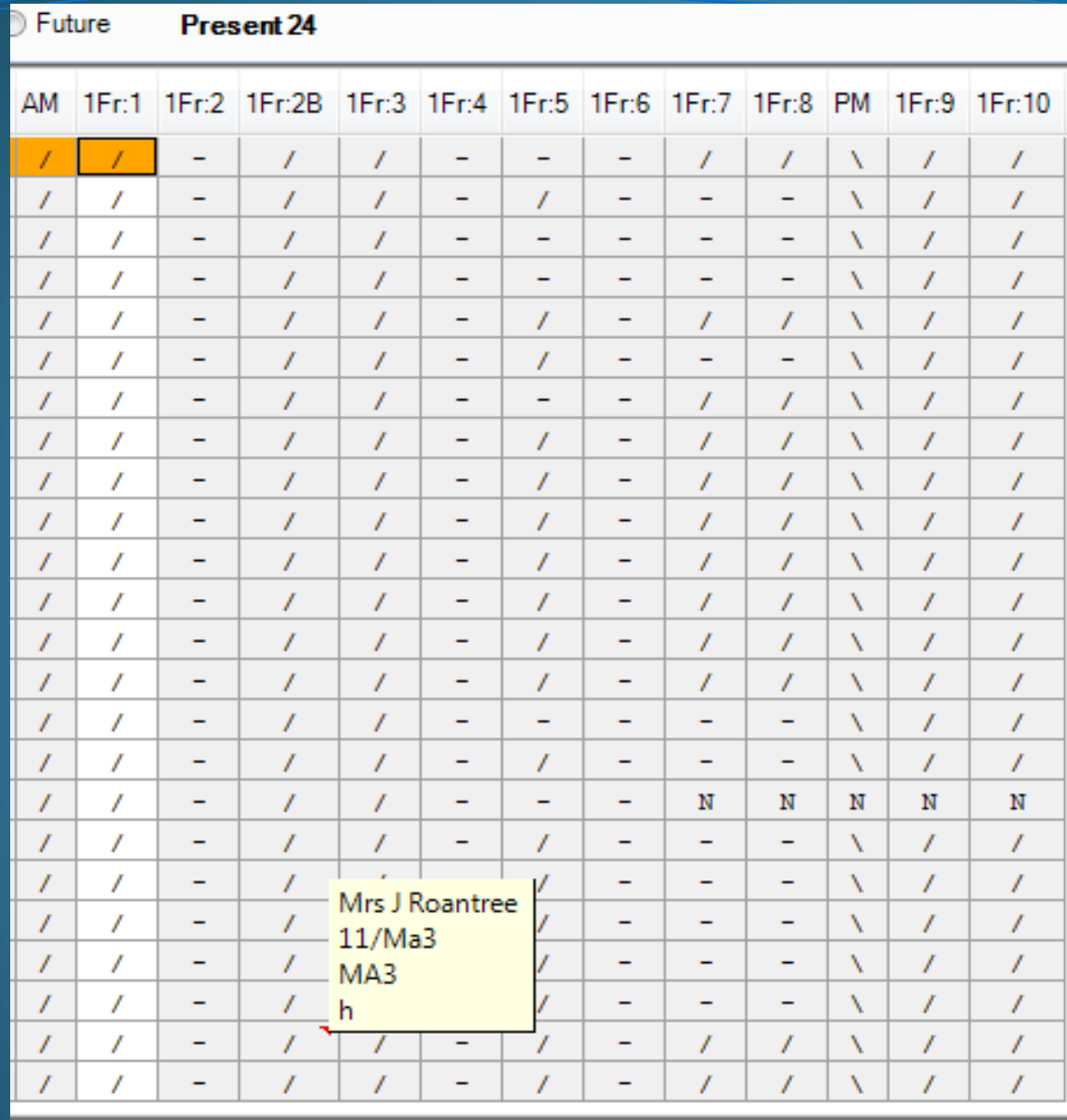




# School systems....



- Diary/ Classroom teacher comments
- **The diary is our means of daily communication with parents / guardians**
- Monitoring attendance – updated procedures
- Research suggests that 17 days missed from school (approximately  $\frac{1}{2}$  day each week), equates to a **GCSE grade**
- Red flag system



- Weekly printout given to FORM teachers
- Note in diary
- Pupils spoken to/ sanctions put in place
- Parents phoned
- Parents invited in



# Opportunity for parental support

- Interest
- Check diary
- Advice/guidance
- Presentation of work
- Proof reading
- Manage time; help plan ahead
- Submission of work by deadlines set



- Resources needed
- Backup e.g. ICT
- Book appointments outside school time
- Avoid clashes – e.g. (Music /Sport/Trips / Holidays)
- If you wish to speak to a member of staff, please contact the school office. Our staff will be informed to return your call. Please contact the school office, if you wish to make an appointment to meet any staff, so this can be arranged around their timetables.



Vice Principal:

Mrs McCarry

# Year 11.. A new start



- Senior school
- New start
- Positive approach
- Good habits
- GCSE public exams





# Study Skills



- Early consistent revision.
- Making revision notes
- Importance of past paper questions –
  - Identify strengths and areas for improvement
  - Learn question styles
  - Use mark schemes to correct answers
  - Test yourself and improve exam technique





# Assessment & Monitoring

- 4 marks on assessment manager.
- Predicted grades/ traffic light system
- Regular reviews by subject teacher/Form Tutor/Head of Year
- Continued contact with parents





# GCSE Controlled Assessment

Prepared at home

- Mostly completed in class in controlled conditions

- Good attendance – vital

- Contributes to achieving good grades
- Booklet -
  - Subject Details
  - Timing (Yr 11 & 12)
  - Significant marks to gain (25% - 100%)

# GCSE Modular Exams



- Booklet Exams in Year 11
  - Significant marks
  - Exams in Year 12
- Impact on Easter Holidays
- Resits - limited
- DA Science, Maths and English – Nov Yr 12
- Re-sits – aim to avoid!

# Help available...

- Experienced teachers
- Individual educational support
- Department support
- Study Skills Seminars
- Mentoring – senior prefects
- Revision classes
- Homework Club available from 3.15pm-4.20pm Monday-Wednesday
- Maths Support every Tuesday 3.15 – 4.20
- Form Tutor (page 2)
- Head of Year
- Counselling Services
- Extra-curricular activities – balance work and leisure
- Refer to pages 3 – 6 in booklets for tips in supporting revision and positive well-being messages





# Help available

[www.bbc.co.uk/learning](http://www.bbc.co.uk/learning)

- Bite size

*Subject help in:*

- Maths
- English

[www.ccea.org.uk](http://www.ccea.org.uk)

- Subject Specifications
- Past Papers
- Mark Schemes
- Exam Timetable



# Year 13 Admissions Criteria

- Entitlement to school place : 4-16 years old
- Vast majority apply to Year 13
  - Application forms issued in January Yr 12
  - 4 AS subjects in Yr 13, 3 A2 subjects in Yr 14
  - Full programme of Careers guidance & advice

*“There are many paths that we might take,  
Help each of us to choose the one that is right”  
Loreto Prayer*





# Don't Panic!

- Designed to help students
  - Loreto students get priority
- 
- 2026 Results Day:  
Thursday 20 August

